

WEDGE BRAKES



**New Design,
Better Performance,
Same Reliability and Quality**



Section 6: Wedge Spring Brakes..... 76-81

Standard Stroke Models



MJW1216 Magnum Performance Plus, Wedge..... 78-79



MJW1624 Magnum Performance Plus, Wedge..... 80-81
(Replacement for M1624GT, P/N 2017156)

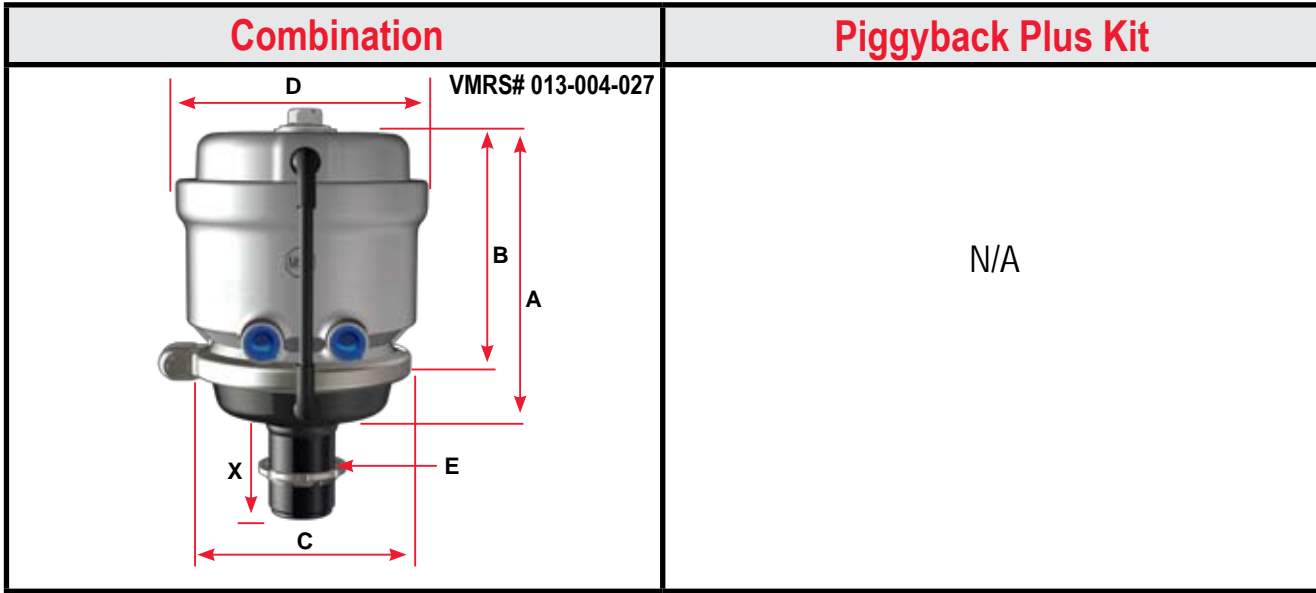
• For Wedge Service Chambers - Refer to Section 5

FEATURES	MJW
Various Tube Lengths Available	
Light Weight, Rugged Aluminum Housing	
Epoxy-Coated Power Spring	
External Breather Tube	
Integral Release Bolt	
Polymer Push-Rod Guides	
Molded Nitrile Rubber Push-Rod Air Seal	
Low Friction Piston and Guide	
Heavy-Duty Nylon Reinforced Diaphragms	

■ Indicates Feature

*** For information on availability, contact MGM Brakes Customer Service, 1-800-527-1534 x750 (U.S. & Canada), or for International email: mail@mgmbrakes.com

NOTE: Product information and specifications subject to change without notice.



MJW Model Features

- Wide Choice Tube Lengths
- Lightweight, Rugged Aluminum Housing
- Epoxy-Coated Power Spring
- External Breather Tube
- Integral Release Bolt
- Polymer Push-Rod Guides
- Molded Nitrile Rubber Push-Rod Air Seal
- Low Friction Piston and Guide
- Heavy-Duty Nylon Reinforced Diaphragms

WEDGE

P/N Series	MJW1216AT	MJW1616AT
Model	MJW1216AT	MJW1616AT
Size	1216	1616
Stroke	1.75" (44.5 mm)	1.75" (44.5 mm)
Push-Rod	ArvinMeritor / Bendix	ArvinMeritor / Bendix
P/N Combination SAE	(a)	(a)
P/N Piggyback Plus Kit SAE	N/A	N/A
P/N Combination METRIC	***	***
Wt. Combination lb (kg)	12.50 lb (5.7 kg)*	12.16 lb (5.5 kg)*
Wt. Single lb (kg)	N/A	N/A
A	7.89" (200.4 mm)	7.15" (181.6 mm)
B	5.83" (148.1 mm)	5.98" (151.9 mm)
C	5.70" (144.8 mm)	6.59" (167.4 mm)
D	6.44" (163.6 mm)	6.47" (164.2 mm)
E	1 3/4" - 12 UNC	1 3/4" - 12 UNC
Inlets	3/8" - 18 NPTF	3/8" - 18 NPTF
X (a)	SEE CHART	SEE CHART

Standard Assembly Part Numbers

Model	MJW1216AT	
Size	MJW1216	
X Dimension	ArvinMeritor	Bendix
2.25" (57.2 mm)	MJW1216AT052	MJW1216AT059
2.85" (72.4mm)	MJW1216AT053	MJW1216AT060
4.10" (104.1 mm)	MJW1216AT054	MJW1216AT061
6.10" (154.9 mm)	MJW1216AT055	MJW1216AT062
Model	MJW1616AT	
Size	MJW1616	
X Dimension	Arvin Meritor	Bendix
2.25" (57.2 mm)	N/A	N/A
2.85" (72.4mm)	MJW1616AT051	MJW1616AT056
4.10" (104.1 mm)	N/A	N/A
6.10" (154.9 mm)	N/A	N/A

NOTE: (a) Refer to "Standard Assembly Part Numbers Chart" for mounting tube length variations.

NOTE: (*) Unit weighed with 5" (127.0 mm) tube (x dimension). Weight will vary in relation to tube length.

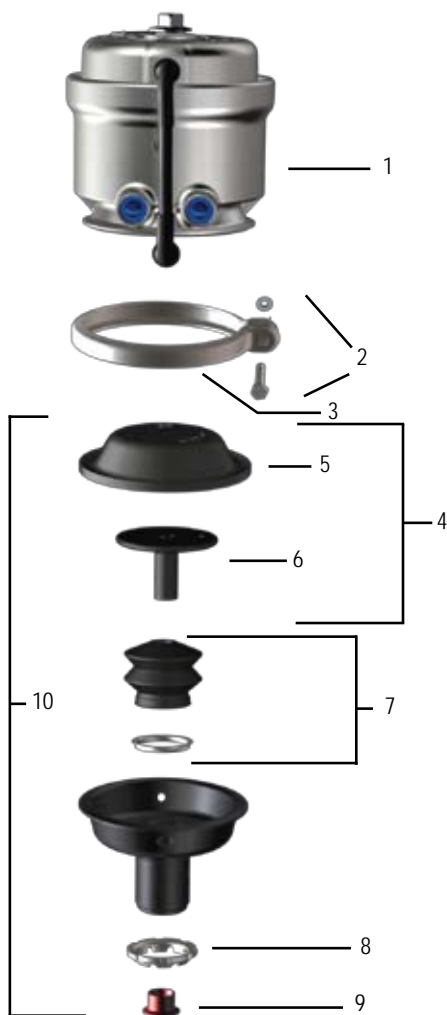
*** For information on availability, contact MGM Brakes Customer Service, 1-800-527-1534 x750 (U.S. & Canada), or for International email: mail@mgmbrakes.com

NOTE: Product information and specifications subject to change without notice.

Replacement Parts			
P/N Series	MJW1216AT	MJW1616AT	
Model	MJW1216AT	MJW1616AT	
Part Description	MGM P/N	MGM P/N	
1	Kit - Breather Tube	9081001	***
2	Kit - Nuts & Bolts	9003002	9003001
3	Clamp Band Assembly	8216012	8216018
4	Kit - Diaphragm/Push Rod	(a)	(a)
5	Diaphragm	(a)	(a)
6	Push Rod	(a)	(a)
7	Kit - Wedge Boot	9004005	9004005
8	Spanner Nut	8034001	8034001
9	Wedge Guide (ArvinMeritor)	8024006	8024006
10	Kit - NP Chamber	Refer to Wedge Chamber service kits below (a)	***

NOTE: (a) Diaphragm is glued to push-rod plate, therefore diaphragm and push-rod assembly are available only as part of item 10 kit.

For additional replacement parts, refer to Replacement Parts Section 11.



Standard Service Kits		
Type MJW1216AT		
Stroke 1.75" (44.5 mm)		
X Dimension	ArvinMeritor	Bendix
2.25" (57.2 mm)	9015247	9015254
2.85" (72.4mm)	9015248	9015255
4.10" (104.1 mm)	9015249	9015256
6.10" (154.9 mm)	9015250	9015257



Ordering: Determine if foundation brake is ArvinMeritor or Bendix type by comparison to piston assembly photos above.

*** For information on availability, contact MGM Brakes Customer Service, 1-800-527-1534 x750 (U.S. & Canada), or for International email: mail@mgmbrakes.com

NOTE: Product information and specifications subject to change without notice.

Combination	Piggyback Plus Kit
	N/A

MJW Model Features

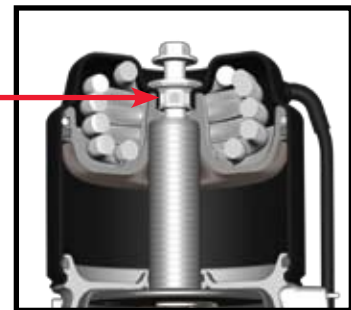
- Tamper Resistant Design
- Lighter Weight
- Compact Size
- External Breather Tube
- Lower Hold-Off Pressure (Less Air Consumption)
- Patented Integral Release Bolt Mechanism for Minimal Bolt Protrusion when manually released.
- Non-Coil Clash Power Spring
- Increased Corrosion Resistance - Steel Head and Epoxy Coated

WEDGE

P/N Series	MJW1624BT
Model	MJW1624BT
Size	1624
Stroke	2.00" (50.8 mm)
P/N Combination SAE	MJW1624BT156
P/N Piggyback Plus Kit SAE	N/A
P/N Combination METRIC	***
Wt. Combination lb (kg)	17.06 lb (7.7 kg)
Wt. Single lb (kg)	N/A
A	8.30" (210.8 mm)
B	7.16" (181.9 mm)
C	6.53" (165.9 mm)
D	6.76" (171.7 mm)
E	1 3/4" - 12 UNC
Inlets	3/8" - 18 NPTF
X	4.50" (114.3 mm)

Release Bolt

Patented "Dual Thread Release Bolt" design, an MGM Brakes exclusive, provides minimal bolt protrusion at maximum release. (Approx. 1.00 inch (25.4 mm) protrusion when manually released)



CAUTION: P/N MJW1624BT156 is for transit applications only. For other applications contact MGM Brakes Customer Service.

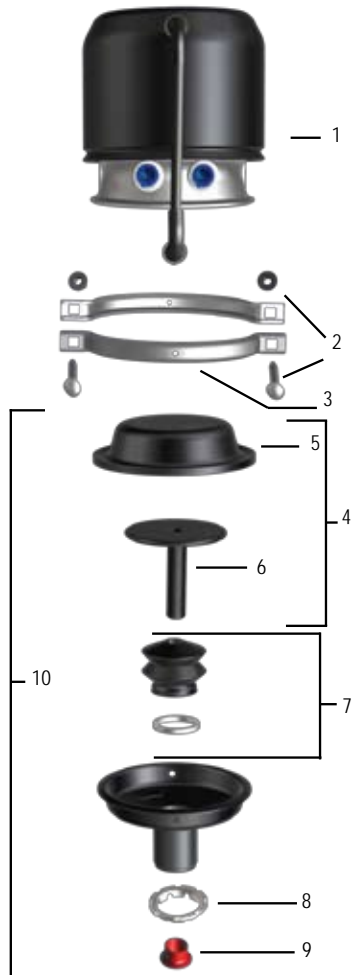
*** For information on availability, contact MGM Brakes Customer Service, 1-800-527-1534 x750 (U.S. & Canada), or for International email: mail@mgmbrakes.com

NOTE: Product information and specifications subject to change without notice.

Replacement Parts		
P/N Series	MJW1624BT	
Model	MJW1624BT	
Part Description	MGM P/N	
1	Kit - Breather Tube	9081007
2	Kit - Nuts & Bolts	9003001
3	Clamp Band Assembly	8216018
4	Kit - Diaphragm/Push Rod	(a)
5	Diaphragm	(a)
6	Push Rod	(a)
7	Kit - Wedge Boot	9004005
8	Collet Nut	8034005
9	Wedge Guide	8024006
10	Kit - NP Chamber	9015196

NOTE: (a) Diaphragm is glued to push-rod plate, therefore diaphragm and push-rod assembly are available only as part of item 10 kit.

For additional replacement parts, refer to Replacement Parts Section 11.



CAUTION: P/N MJW1624BT156 is for transit applications only. For other applications contact MGM Brakes Customer Service.

*** For information on availability, contact MGM Brakes Customer Service, 1-800-527-1534 x750 (U.S. & Canada), or for International email: mail@mgmbrakes.com

NOTE: Product information and specifications subject to change without notice.